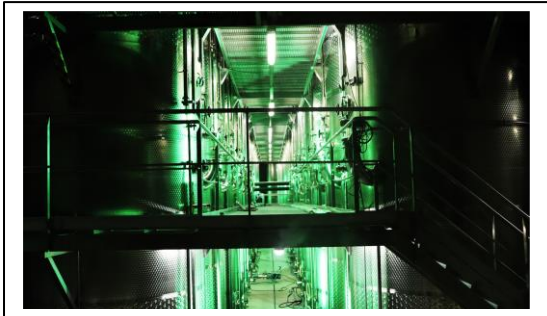
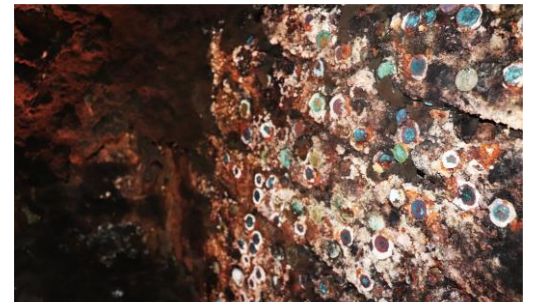




- use this scale for the points of attention



One the one hand the winery has modern structures and aesthetic on the other hand it's cellar has mold and old dirty coins stacked in the walls.



Perfect.

POINTS OF ATTENTION:

- Selection of wines:
- Friendliness and know-how of staff:
- Pricing:
- Wine Quality:
- Overall impression:



At the winery's museum entrance, you experience a spectacular fountain. But as you continue exploring the museum it becomes more inaccurate with any story telling delivered about wine rather than random placed wine materials.



Amazing.

POINTS OF ATTENTION:

- Selection of wines:
- Friendliness and know-how of staff:
- Pricing:
- Wine Quality:
- Overall impression:



There are modern wine tanks on the left. On the right, the tanks are also been used for special Vinification techniques but the supporting materials are from old moldy wood which warns negatively the consumers about the wine quality.



Modern.

POINTS OF ATTENTION:

- Selection of wines:
- Friendliness and know-how of staff:
- Pricing:
- Wine Quality:
- Overall impression:

Friendly hosts. Personal service and courtesy. To be addressed on a personal level. Genuine interest. Gifts and surprises through a reward system.